



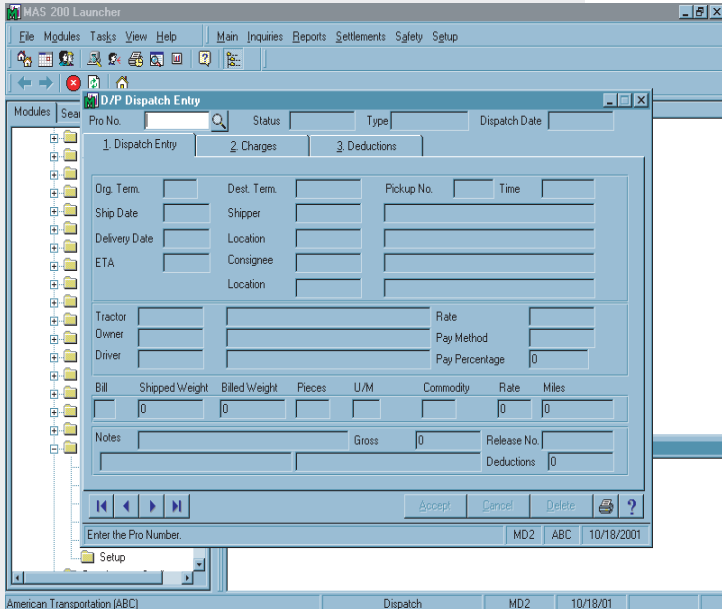
Dispatch/ Brokerage

Description:

The Dispatch/Brokerage Module provides for the total control of a trucking, shipping, and Brokerage Company with the accounting functions of Mas90/200.

The system is designed to control and track dispatched jobs and loads from point of entry through completion with processing for billing and payment to the third party involved with completing the job. Track other important information like certifications, testing, locations, and safety control.

The Dispatch/Brokerage Module provides for the tracking of the following items: Terminal Maintenance, Sur Charge Maintenance, Driver Maintenance, Commodity Maintenance, Owner Maintenance, Deduction Maintenance, Trip Lease Maintenance, Revenue Split Maintenance, Broker Maintenance, Charge Maintenance, Trailer Maintenance, Tractor Maintenance, Commodity Code, etc...



MAS 90 MAS 200

Client/Server
Client/Server for SQL Server

Requirements

General Ledger
Accounts Receivable
Accounts Payable
Bank Reconciliation

Product Details:

Enter a dispatch; assign a Driver/Owner, input commodity, weight, shipper, consignee, location, added charges and surcharges. Decide whether you are billing flat, by miles, or by a percentage. Dispatch the load, print your paperwork and release the load.

Once the load is dispatched, track it through completion and process the load to automatically generate the billing for Accounts Receivable and the Pay Record for the terminal, broker, driver, owner or any combination of the same.

Keep load history, revenue history, track locations for inbound and outbound control. Print out of service reports, date sensitive expiration and safety reports.

<http://www.xsysinc.com>