

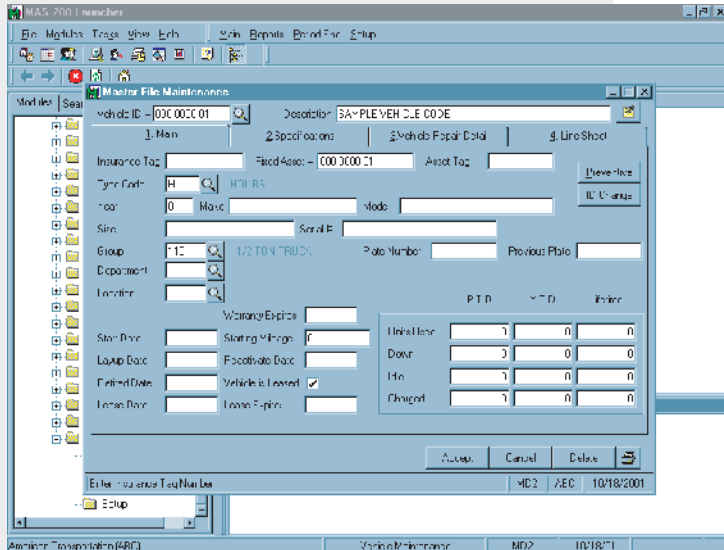


# Vehicle/Equipment Maintenance

## Description:

The Vehicle/Equipment Maintenance enhancement provides for tracking of equipment at a number of levels, such as:

- At the Equipment level with tag ID's, descriptions, VIN numbers, plate numbers, expirations for warranties, plates, asset retirement and rates for charging when used in production.
- At the Preventative Maintenance level with schedule Preventative Maintenance with pre-designed parts, templates and processes to complete the PM.
- At the Repair level with full history and entry of parts, outside servicing, labor and costs of repairs for each piece of equipment or vehicle.
- At the Usage level tracking time and/or mileage and the type of usage tracked at the vehicle level.
- At the Job level by scheduling equipment to jobs with costing to the job specific vehicle or equipment charges.
- Service scheduling with automatic alerts for sensitive repair areas.



Sage MAS 90  
Sage MAS 200

Client/Server  
Client/Server for SQL Server

Requirements  
Library Master

## Optional Modules

Fixed Assets  
Job Costing  
General Ledger  
Inventory  
Accounts Payable

## Product Details:

Set-up vehicles or equipment in the Vehicle Maintenance file. Assign ID's and enter all the specific information from License ID's to rates and locations.

Schedule and make sure you have required parts for repairs that can be requested and scheduled ahead of time.

Open repair tickets, request schedule repairs or schedule and conduct Preventative Maintenance for a range and/or a specific piece of equipment or vehicle.

Track locations of vehicles and next scheduled job for vehicle or piece of equipment.

Enter Memo's as in other MAS 90/200 modules at a memo level.

Keep repair costs, PM costs and Revenue's as the Equipment level.

Print: Preventative Maintenance Schedules, Equipment Vehicle Master File Details, Inventory Lists, Usage Registers, Request for Maintenance Tickets, Repair Detail Report at the Vehicle/Equipment Level, Line Sheet Detail, Preventative Maintenance Templates, Job Costing by Vehicle, etc...

<http://www.xsysinc.com>